

# Video Clarity



Tools for Video Analysis

## RTM Manager System Guide



## TABLE OF CONTENTS

TABLE OF CONTENTS .....	2
<b>1 RTM MANAGER OVERVIEW</b>	<b>3</b>
<b>2 HARDWARE SETUP</b>	<b>4</b>
<b>3 SOFTWARE SETUP</b>	<b>5</b>

# 1 RTM Manager Overview

RTM Manager is designed to be used in conjunction with one or more Video Clarity Real Time Monitors (RTMs). The RTM Manager is a automated central store, logger and playback server allowing instantaneous access to all RTM error events and recordings.

The Web Server Dashboard in a Browser consists of two portions:

## Webserver

- Provides health and activity of multiple RTMs to any user with a Web Browser.
- Alarming on errors from any RTM unit
- Alarming when a RTM has gone offline.
- Provide long-term statistical data across multiple units.

## Centralized Error Viewing Station

- Erred video/audio recordings are immediately transferred to RTM Manager from any RTM as soon as the error has occurred, allowing operators to view the errors without stopping the RTM which caught the error.

## 2 Hardware Setup

Figure 1: RTM Manager Front Panel



Figure 2: RTM Manager Back Panel



Output 2      Output 1

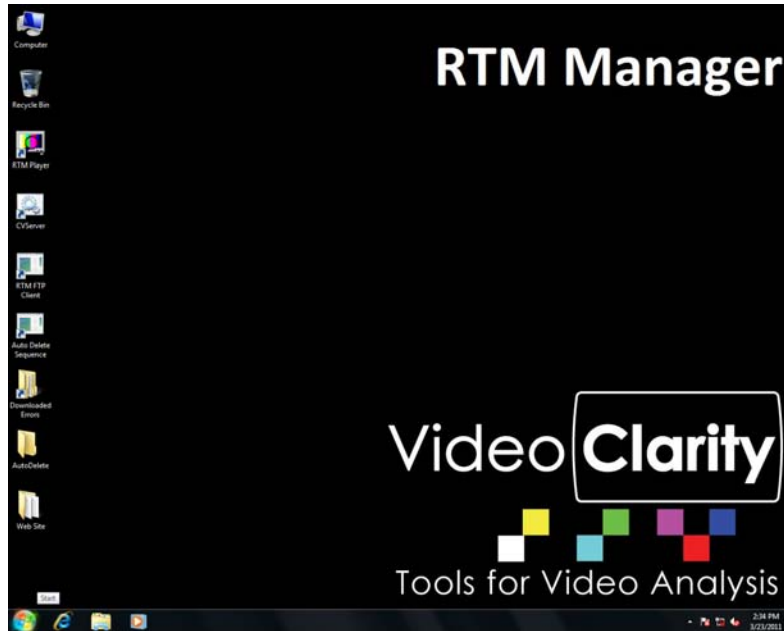
### Connections

- Connect the included USB Keyboard and Mouse.
- Connect a VGA monitor to the VGA output connector.
- Connect SDI output one (Out1) to an SDI monitor.
- Connect a Network cable (RTM Manager must communicate with RTM's over the network).
- Power on the unit. By default, RTM Manager powers up with a restore of AC power, so the unit will power on as soon as power is applied.

### 3 Software Setup

Power on the unit. It will boot to Windows 7, Professional. You will see several shortcuts on the windows desktop.

Figure 3: Desktop Shortcuts



#### Configuring the RTM Clients

RTM Manager queries multiple RTM units based on the entries in the file UnitDesc.txt. This file is found by double-clicking on the Desktop shortcut called "Web Site".

#### Step 1 – Stop RTM Manager Web Server

In the website folder is a script file named "Stop IIS". The webserver must be stopped before the configuration file can be edited.

The UnitDesc.txt file contains the necessary information for RTM Manger to find RTM units to monitor.

#### Step 2 – Edit the UnitDesc.txt file

Double-click on the file UnitDesc.txt. Edit the file to match your installation. The file format is as follows:

```
<IPAddress>Tab<UnitName>Tab<Description>Tab<RTMLogLocation>Tab<AudioR  
oot>Tab<FTPUserName>Tab<FTPPassword>
```

**Only the first 3 fields can be modified.** The remaining fields of each line must remain the same as the example below and in the file itself located on your RTM Manager.

**IPAddress – The actual IP address of the RTM Client.**

**UnitName – A name you give the unit**

**Description – Additional information you may want to insert about that unit.**

#### Example UnitDesc.txt File

192.168.1.93	RTM1	East Coast Feed A	/J/rtmlog/	/J/AudioRoot/	user	user
192.168.1.94	RTM2	East Coast Feed B	/J/rtmlog/	/J/AudioRoot/	user	user
192.168.1.95	RTM3	West Coast Feed A	/J/rtmlog/	/J/AudioRoot/	user	user
192.168.1.96	RTM3	West Coast Feed B	/J/rtmlog/	/J/AudioRoot/	user	user

Because this file is used by the Webserver running on the RTM Manager, it can only be edited when the server is not running. To do this, double-click on the file “Stop IIS”. Once the file is edited and saved, double-click on the file “Start IIS”.

### **Step 3 – Re-Start the IIS Webserver**

Double-click the script file “Start IIS.bat”

### **Step 4 – Start the RTM FTP Client**

Double-Click the Desktop shortcut called “Start FTP Client” This client constantly monitors the RTM units for A/V errors they may have recorded. When errors are found, the uncompressed A/V recordings are instantly transferred to the RTM Manager for operator review.

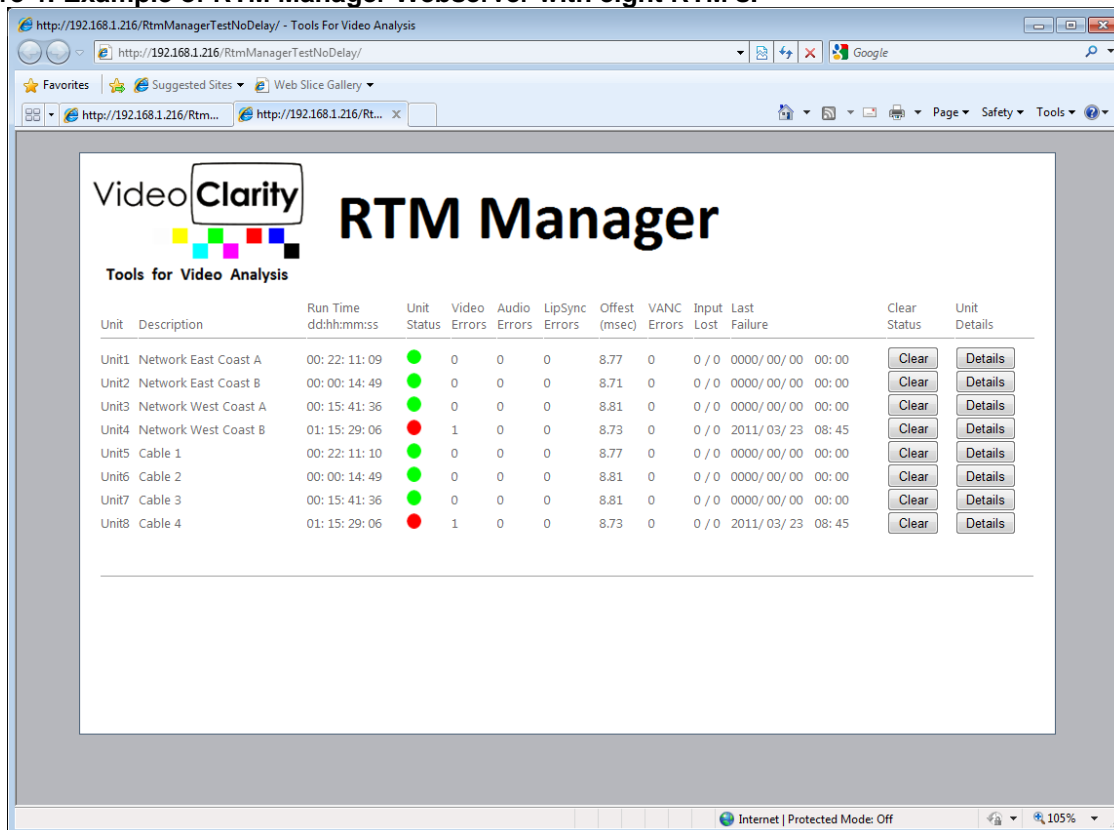
### **Starting to Monitor the RTM’s**

Once the Webserver has been started, any computer on the network can access the site by going to

<http://xxx.xxx.xxx.xxx/RTMManager>

Where the x’s are the ip address or hostname of the RTM Manager.

**Figure 4: Example of RTM Manager Webserver with eight RTM's.**



## Desktop Shortcut Descriptions

**RTM Server** – Shortcut that start RTM Player. RTM Player is the Viewing application used for inspecting erred recordings. RTM Server must be running at all times.

**RTM FTP Client** – This is the script, previously known as “RTM Manager”

**Downloaded Errors** – This is a shortcut to the errors that RTM FTP Client Downloads

**Auto Delete Folder** – Dragging RTM logfiles into this folder automatically removes the log file and associated audio/video recordings

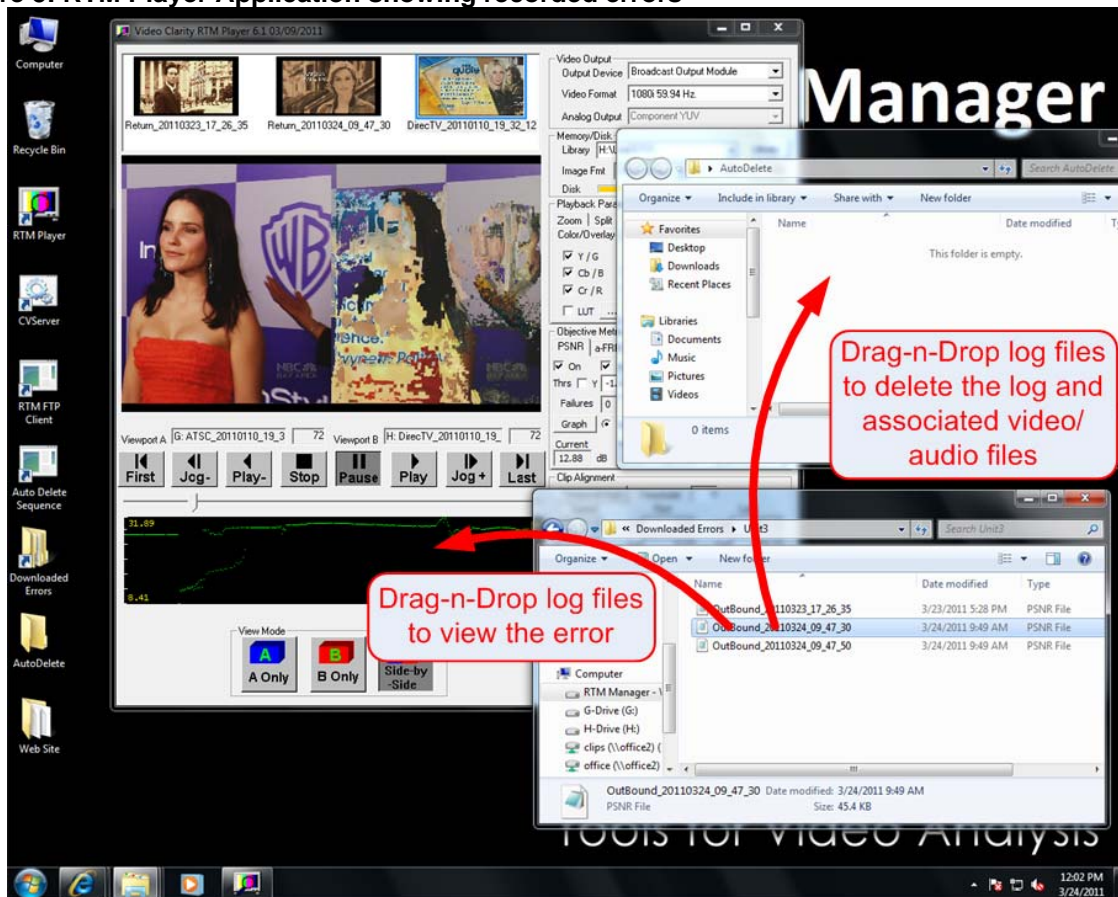
**Web Site** – This folder contains the following:

**Stop IIS** – Stops the web server (you need this to stop the web site if you want to update the UnitDesc file)

**Start IIS** – Starts the web site

Viewing erred recordings with the RTM Player application

Figure 5: RTM Player Application showing recorded errors



When errors are recorded by an RTM, the log file and the uncompressed video and audio files are transferred from the RTM to the RTM Manager. All log files are found in the folder "Downloaded Errors". There is a shortcut to this folder on the desktop. Double-click the shortcut to open the folder. Browse to the sub-folder for the RTM unit's failures to be viewed. Drag and drop the log file onto the RTM Player application. The video/audio recording will be loaded into RTM Player and is ready to be viewed.

To remove a log file and associated video/audio files from the RTM Manager, drag and drop it onto the AutoDelete folder.